



# Reading



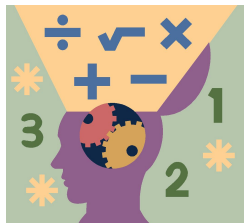
- Please return reading logs every day.
- Next week: *Animals in Poems*
- **Essential Question: What do we love about animals?**
- Genre: Poetry
  - A rhyming poem:
    - has words that end with the same sounds
    - tells a poet's thoughts or feelings
- Vocabulary Strategy: words in context
- **Vocabulary: behave, flapping, express, feathers, poem, rhyme, rhythm**
- Listening Comprehension: Strategy: make, confirm, revise predictions
- Unit 2 Theme Test this week.

# Spelling



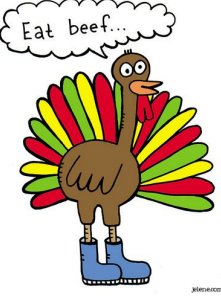



- **three-letter blends: scratch, scrape, spring, throne, stripe, strange, shred, splash, split**
- **Review High-Frequency Words: catch, sting, far, flower, until, leaves, understands**
- No Test this week! Happy Thanksgiving!

# MATH



- Unit 2 Addition within 200
- Review the relationship between addition and subtraction.
- Explore methods of 2-digit addition that involve making a new ten or hundred.
- Key Addition words: total, altogether, combined, both, sum, plus, add, increase, join...how many in all?
- Riverdale Family Page: REFLEX Math - Great Job earning those **GREEN** Lights!

 <h2>Educational Websites</h2>	<ul style="list-style-type: none"> <li>• <a href="http://www.sheppardsoftware.com">www.sheppardsoftware.com</a></li> <li>• <a href="http://www.eduplace.com">www.eduplace.com</a></li> <li>• <a href="http://www.spellingcity.com">www.spellingcity.com</a></li> <li>• <a href="http://www.fun4thebrain.com">www.fun4thebrain.com</a></li> <li>• <a href="http://www.eduplace.com">www.eduplace.com</a></li> <li>• <a href="http://www.thinkcentral.com">www.thinkcentral.com</a></li> <li>• <a href="http://www.abcya.com">www.abcya.com</a></li> </ul>
 <h2>Science Social Studies</h2>	<ul style="list-style-type: none"> <li>• Riverdale home page, staff, resources:</li> <li>• Tumble Books: username: remschool</li> <li>• password: books</li> <li>• PebbleGo- Username: rems Pass: school</li> <li>• Google: Food Pyramid game “Blast off”</li> <li>• <b>Essential Question:</b> What do we love about animals?</li> </ul>
<p><b>~Thanksgiving Break: November 26 &amp; 27 No school</b></p> 	<ul style="list-style-type: none"> <li>• <b>Monday, Day 4:</b> Technology, Library</li> <li>• <b>Tuesday, Day 5:</b> PE, Music</li> <li>• <b>Wednesday, Day 6:</b> Art</li> <li>• <b>Thursday, NO School - Happy Thanksgiving</b></li> <li>• <b>Friday, No School</b></li> </ul>
<h2>Character Education:</h2>  <p><i>Warm Winter clothes for recess please!</i></p>	<ul style="list-style-type: none"> <li>• <b>The Riverdale Way: RESPECTFUL</b></li> <li>• <b>Do you treat others the way you would like to be treated?</b></li> <li>• <b>Do we strive for a happy and healthy recess break? We need to be good friends at recess.</b></li> <li>• <b>We welcome our new student: Abigayle Folts</b></li> <li>• <b>We enjoyed learning about Calvin!!!</b></li> <li>• <b>Next Star of the Week: Riley!</b></li> </ul>

